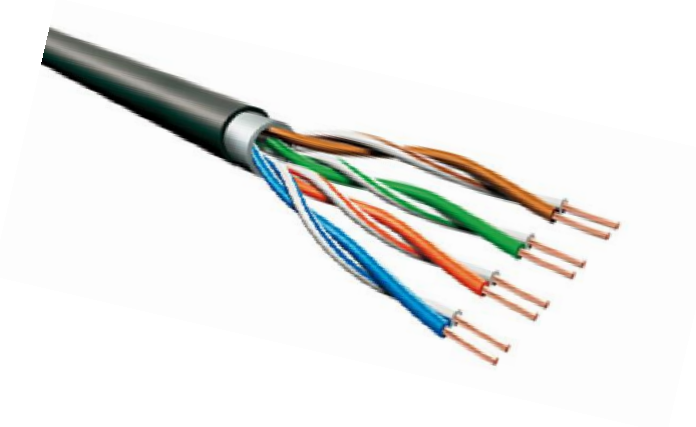
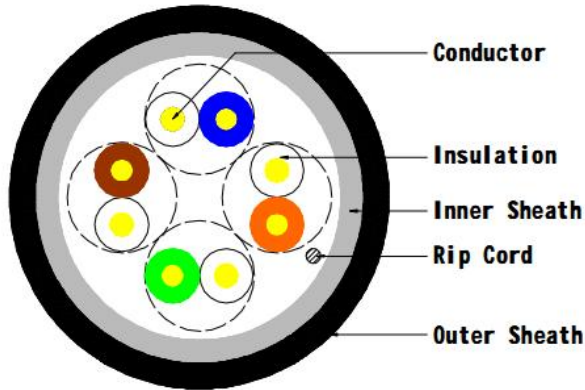


Category 5e CCAM UTP Cable Double Jacket for Outdoor

Part Number: EPCAT5EV2EXT



Application

Voice, Data, Security and Video Applications.
IP Megapixel CCTV/Analog Installations
Wire Access Points
Gigabit Outdoor Video/data installations
Suitable distance PoE feeding

Standards

ANSI EIA/TIA 568 C.2;
ISO/IEC 11801 2nd Edition; IEC 61156-5
EN 50173; EN 50288-3-1
IEEE 802.3at

UV Resistance Rating

EN 50289-4-17

Construction

Conductor	Copper Clad Aluminum Magnesium (AWG24/0.50mm)
Insulation	Polyethylene, $\varnothing 0.91 \pm 0.02$ mm
Insulation Color	Blue/White-Blue, Orange/white-Orange, Green/white-Green, Brown/white-Brown
Twisting	2 cores to the pair
Cable lay up	4 pairs to the core
Inner Sheath	PVC Grey RAL 7046
Diameter	5.0 ± 0.2 mm
Outdoor Sheath	Black LDPE
Diameter	6.2 ± 0.2 mm

Mechanical properties

Minimum bending radius	Installation	8 x D
Temperature range	Installed	4 x D
	during operation	-20 °C ~ + 60 °C
	during installation	0 °C ~ + 50 °C

Electrical properties @ 20°C

Conductor resistance	Max 24 ohm/100M at 20°C
Max Operating capacitance	56 nF/KM
Standard impedance	100±15 ohm between 1Mhz and 100Mhz
Minimum bending radius	50mm
Dielectric strength DC(V) / minute	1000
Min Dielectric resistance	5000 MΩ·KM
Working temperatures	-20~60°C

Nominal transmission characteristics @ 20°C

Frequency (Mhz)	ACR (dB)	RL (dB)	ATT (dB/100)	Min NEXT (dB)	Min PS-NEXT (dB)	Min ELFEXT (dB)	Min PS-ELFEXT (dB)
1	66.3	20	2.1	68.0	66.0	63.8	60.8
4	55.2	23.0	4.2	59.2	57.2	51.7	48.8
8	49.0	24.5	5.9	54.8	52.8	45.7	42.7
10	46.8	25	6.6	53.3	51.3	43.8	40.8
16	42.1	25	8.3	50.3	48.3	39.7	36.7
20	39.5	25	9.4	48.8	46.8	37.8	34.8
25	36.9	24.3	10.3	47.3	45.3	35.8	32.8
31.25	34.2	23.6	11.8	45.9	43.9	33.9	30.9
62.3	24.4	21.5	17.1	41.1	39.4	27.8	24.8
100	16.3	20.1	22.2	38.3	36.3	23.8	20.8